



*Waterfront*

**Floor Plans**



**SUITE #1**  
11'3" x 12'11"

**BATH #1**

**ENTRY**

**FOYER**

**DRY BAR**

**POOL**

**SPA**

**DOCK**

**GLASS  
ELEVATOR**

**PANTRY**

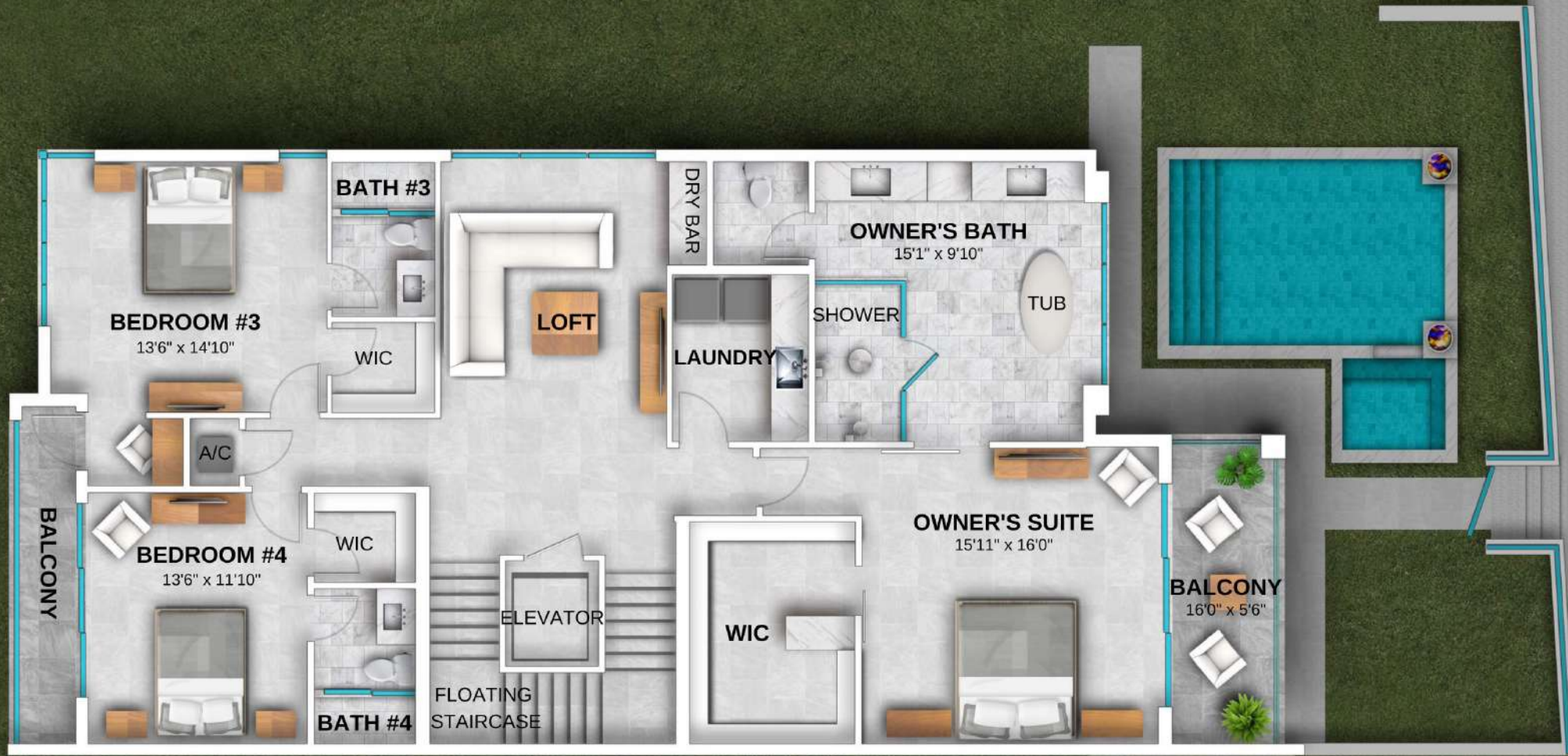
**FLOATING  
STAIRCASE**

**ICE  
FRIDGE**



# 1<sup>st</sup> Floor

- Private driveway with space for 4 vehicles, 2-car garage with option for car lift
- Double door entry to large foyer
- Glass elevator feature and signature SkY360 floating staircase
- Bedroom with en suite bathroom
- Large gourmet kitchen with oversized island, natural gas Wolf & SubZero appliances and large walk-in pantry
- Generous living room with steam fireplace and cove lighting
- Open concept dining room with built-in dry bar and cove lighting
- Fully equipped Summer Kitchen with island, pizza oven, BBQ, Big Green Egg, fridge & sink
- 40ft on the water with deep water access & no fixed bridges
- Private pool and spa with fire features





## 2<sup>nd</sup> Floor

- Expansive master suite
  - Private balcony with waterfront views
  - Oversized walk-in closet with an island
  - Generous en-suite bathroom featuring a double vanity, freestanding tub, and rain dome shower with body sprayers
- Two additional bedrooms each with a walk-in closet & en-suite bathroom
- Open concept loft area that can be enclosed as a 5th bedroom
- Laundry room with a sink, cabinetry and countertop space
- Private elevator & floating staircase



FLOATING  
STAIRCASE

ELEVATOR

ROOFTOP





# Rooftop

- Private elevator & floating staircase
- Finished in porcelain tile
- Option for solar panels
- East & West exposure



# Live the Vacation Lifestyle



*\*The Developer reserves the right to make modifications to the product design, pricing and specifications without notice. Square footages are approximate and may vary. All images shown on this material are conceptual renderings only. Conceptual renderings may not reflect the final product.*